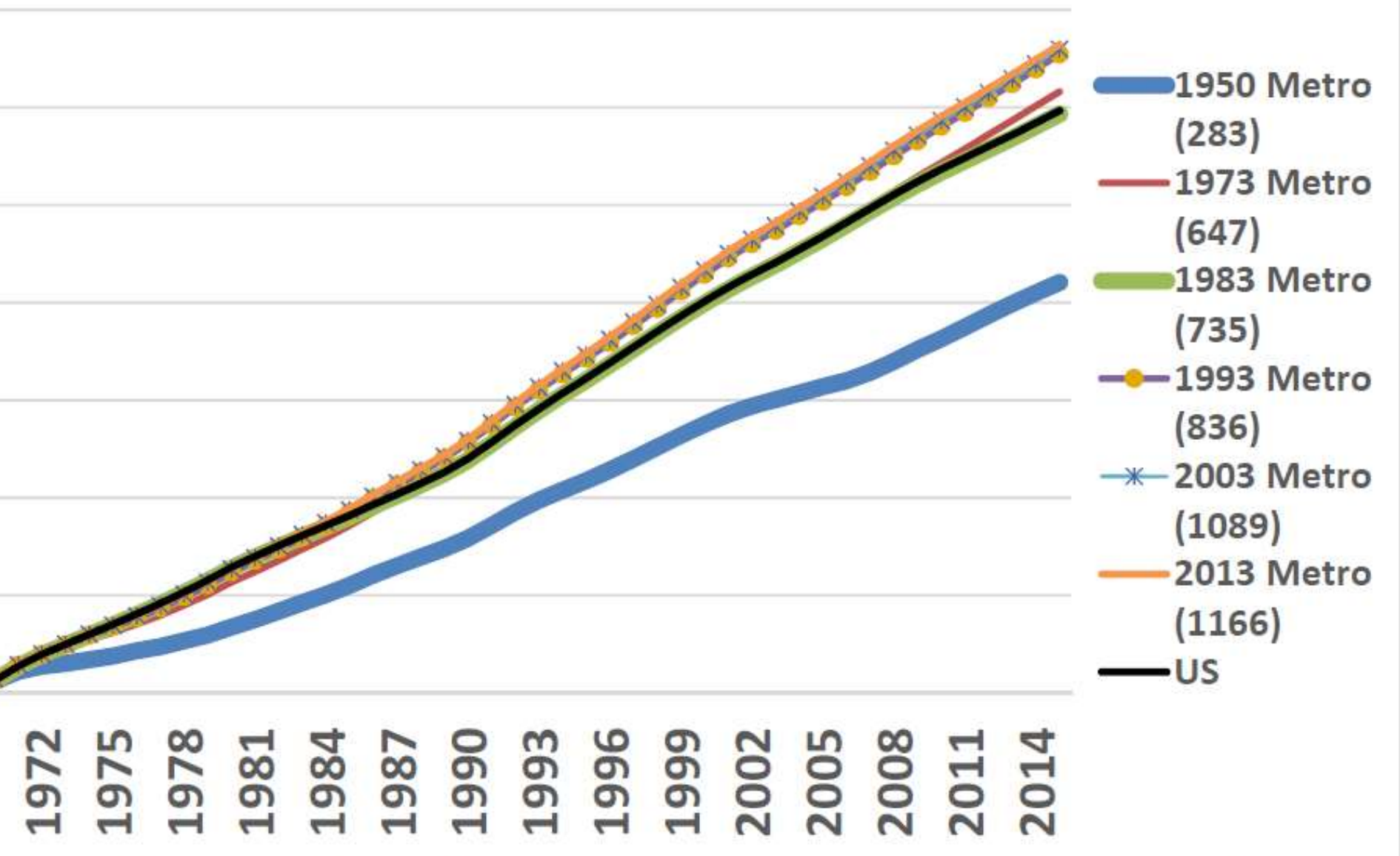


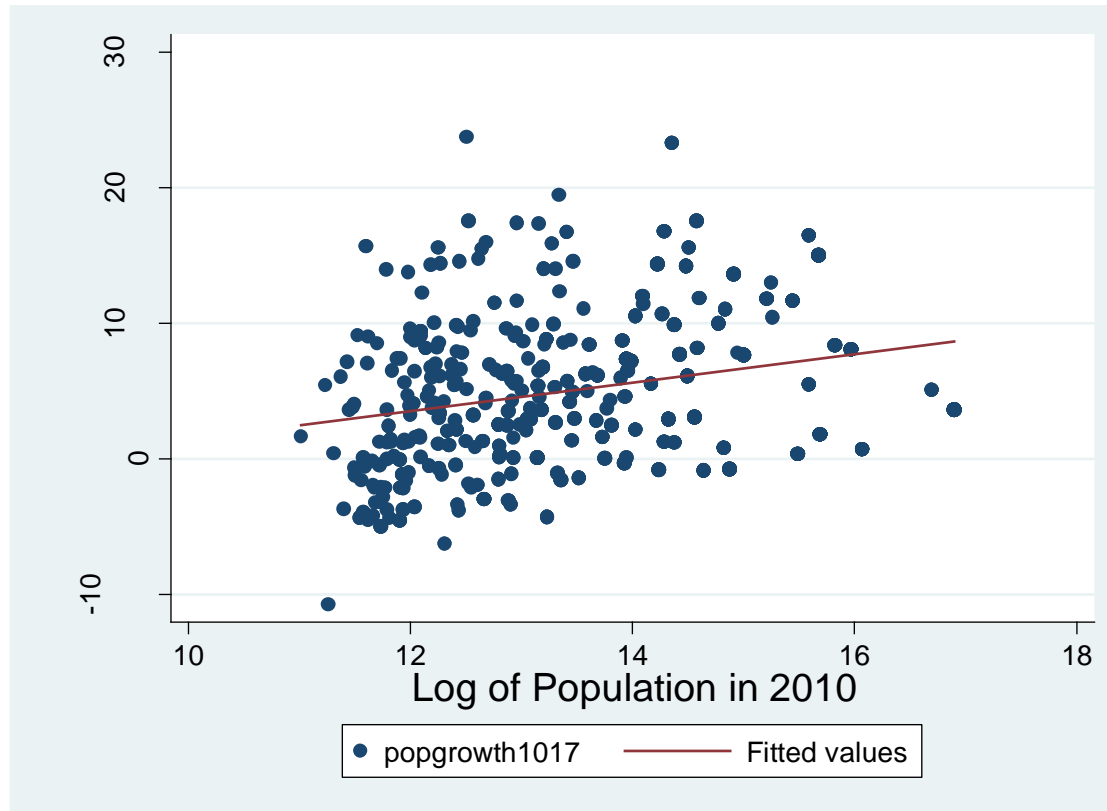
Figure 2, Population Growth of Metro Area by historical MSA Definition:  
100 = 1969 Population



Bureau of Economic Analysis for population and U.S. Census Bureau for metro definitions.

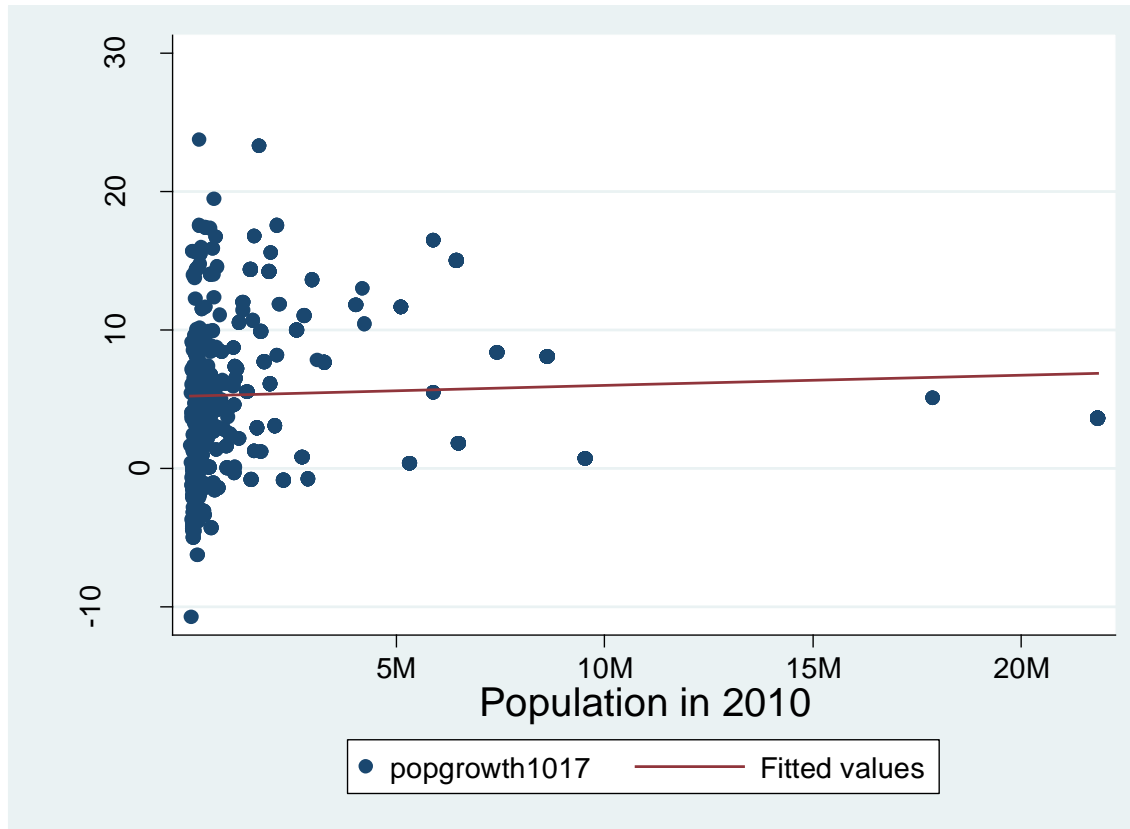
# Population growth (%) vs Population (logs) in 2010

MSAs, 1993 USDA and U.S. Census Bureau MSA Definitions



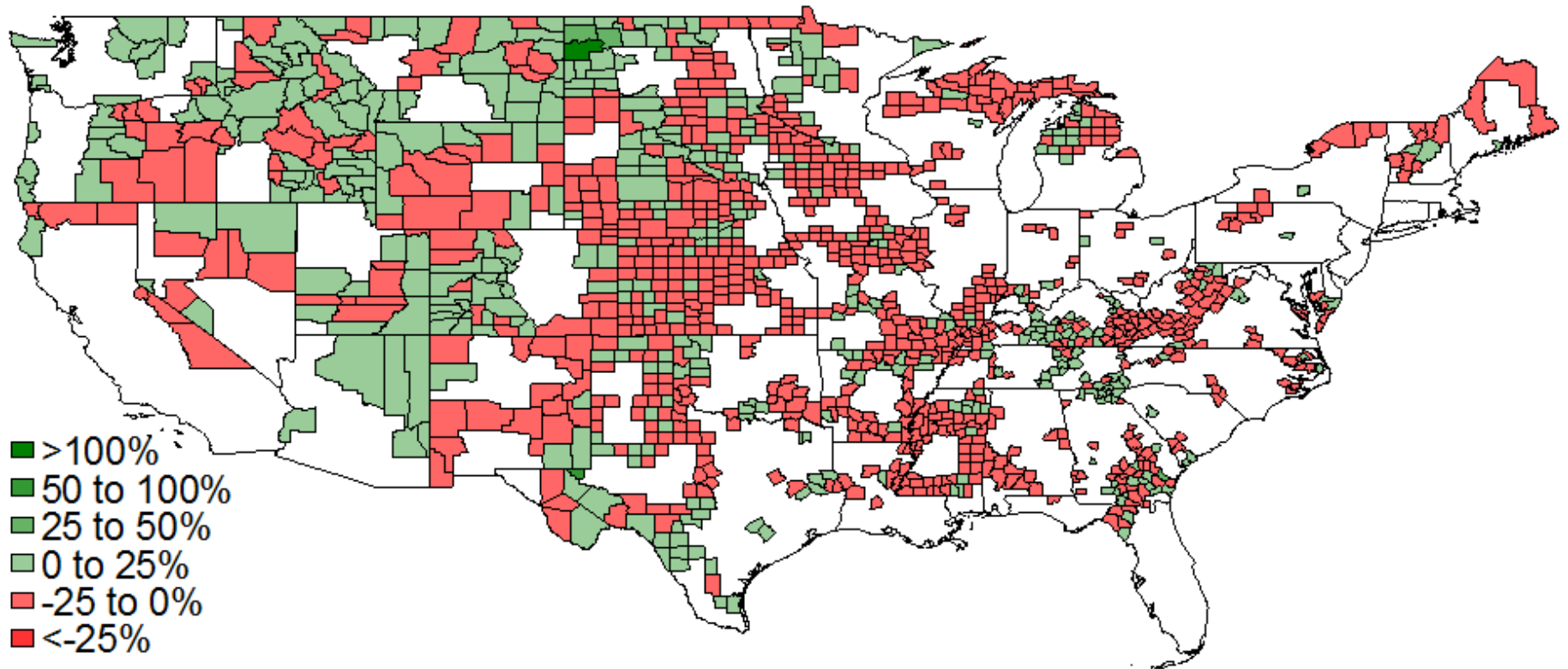
# Population growth (%) vs Population in 2010

MSAs, 1993 USDA and U.S. Census Bureau MSA Definitions



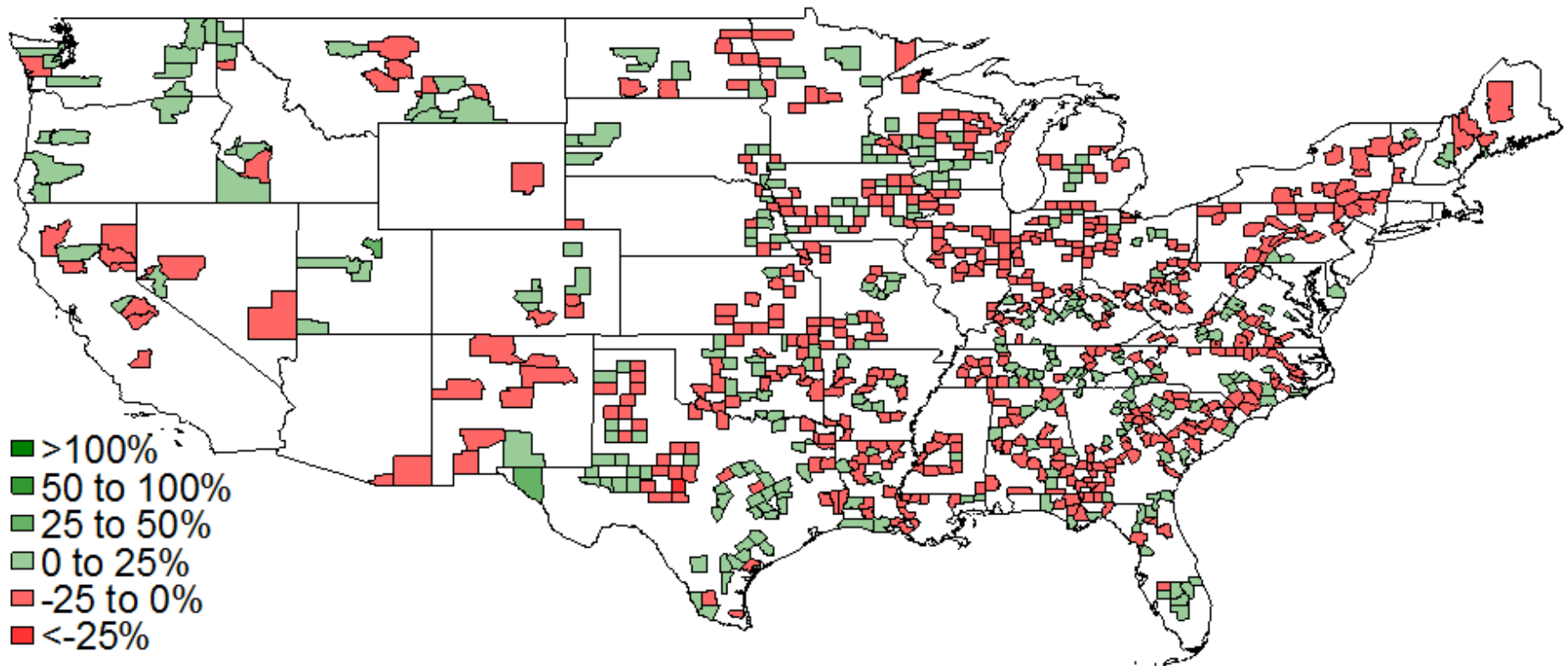
# Population growth 2010-2017 (%)

Non-metro, non-adjacent areas, 1993 USDA and U.S. Census Bureau MSA Definitions



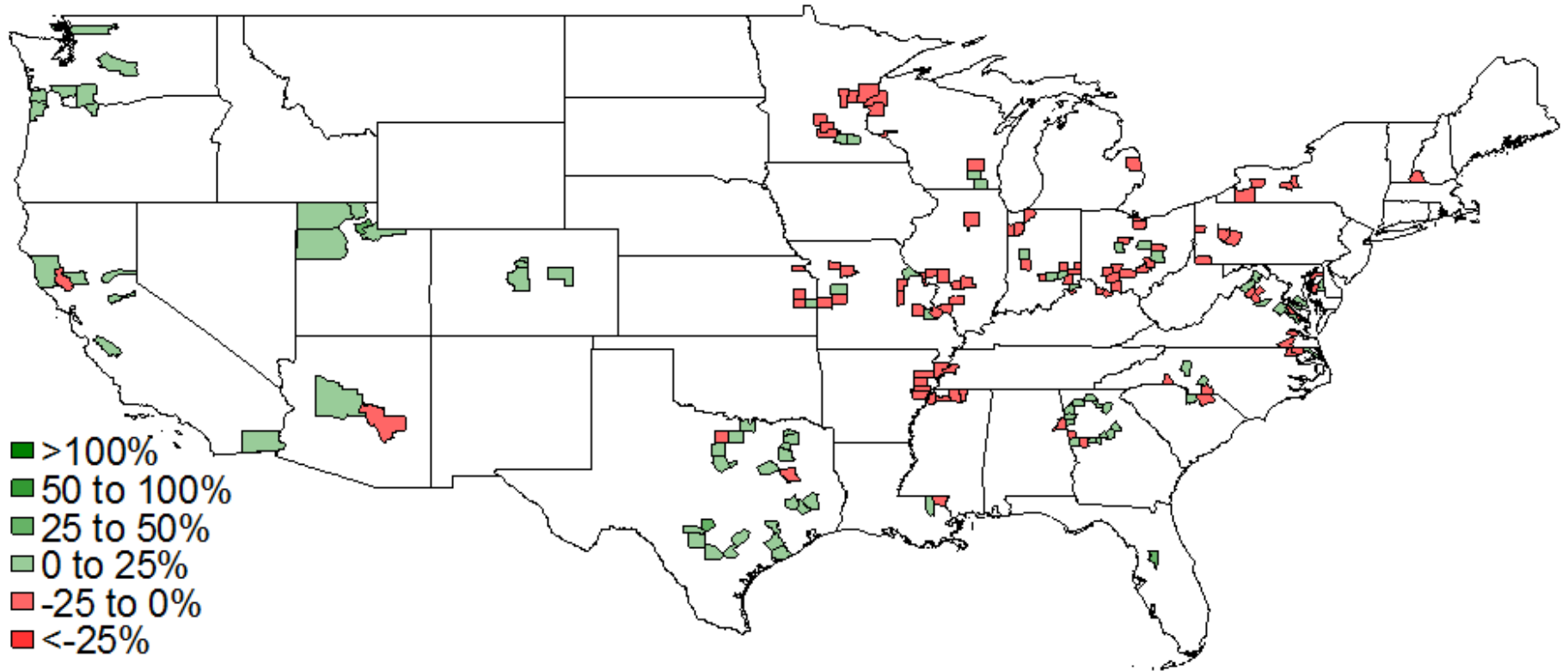
# Population growth 2010-2017 (%)

Non-metro, adjacent to small metro areas, 1993 USDA and U.S. Census Bureau MSA Definitions



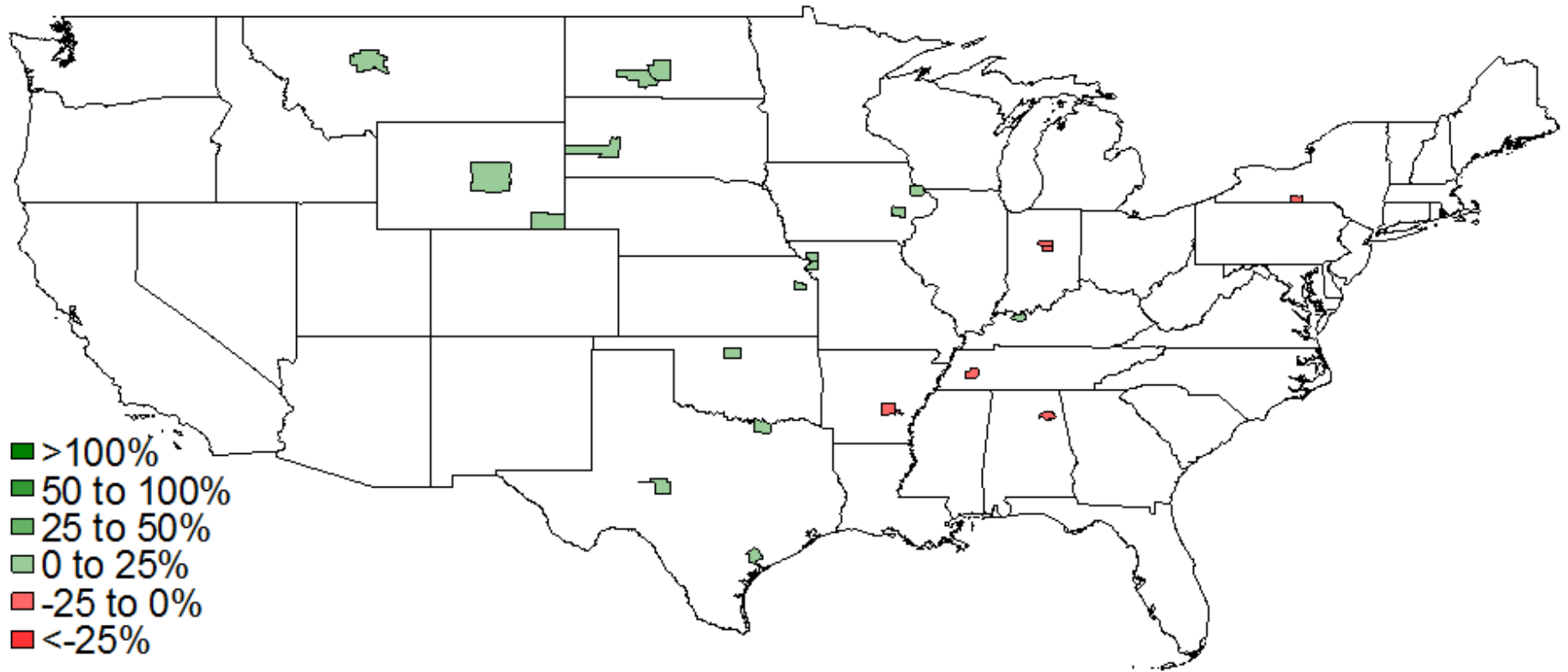
# Population growth 2010-2017 (%)

Non-metro, adjacent to large metro areas, 1993 USDA and U.S. Census Bureau MSA Definitions



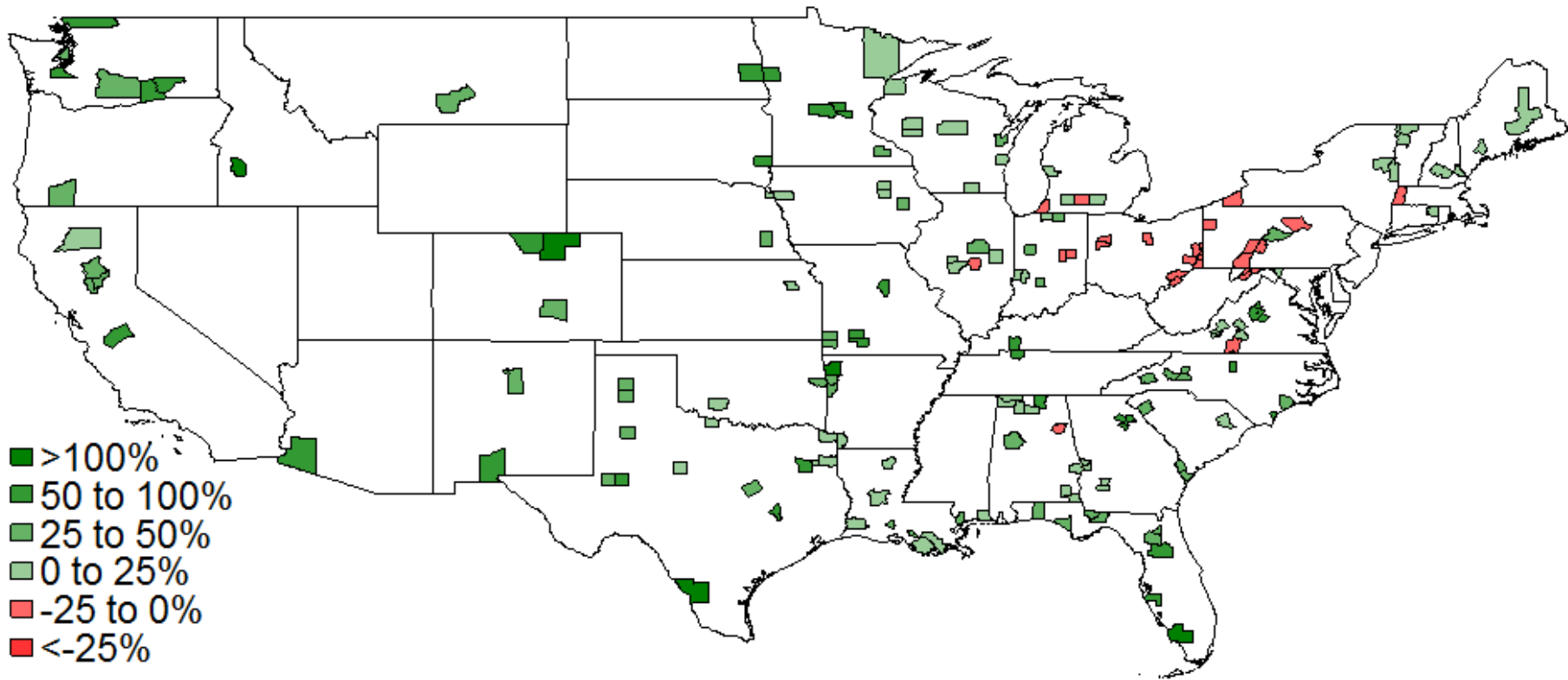
# Population growth 2010-2017 (%)

Metro areas, Population 50-100 k, 1993 USDA and U.S. Census Bureau MSA Definitions



# Population growth 2010-2017 (%)

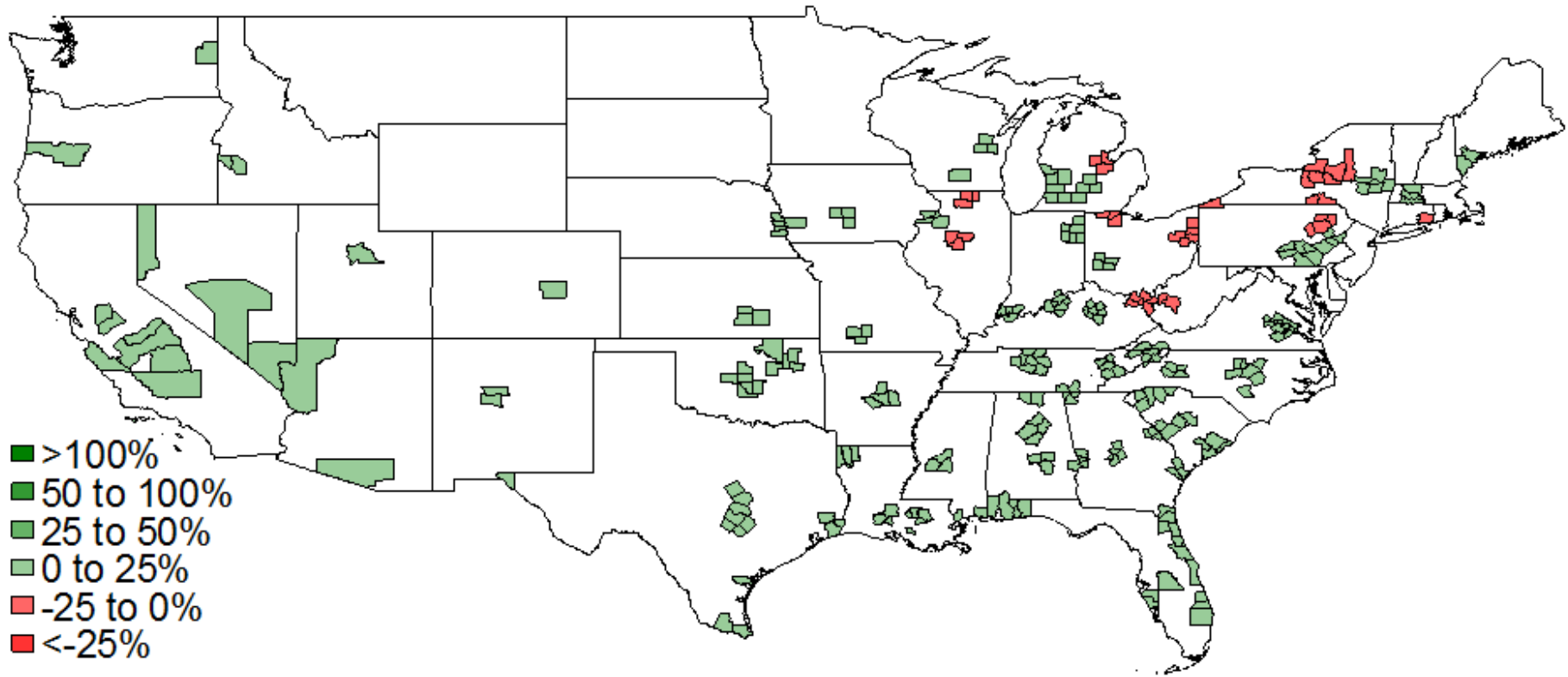
Metro areas, Population 100-250 k, 1993 USDA and U.S. Census Bureau MSA Definitions





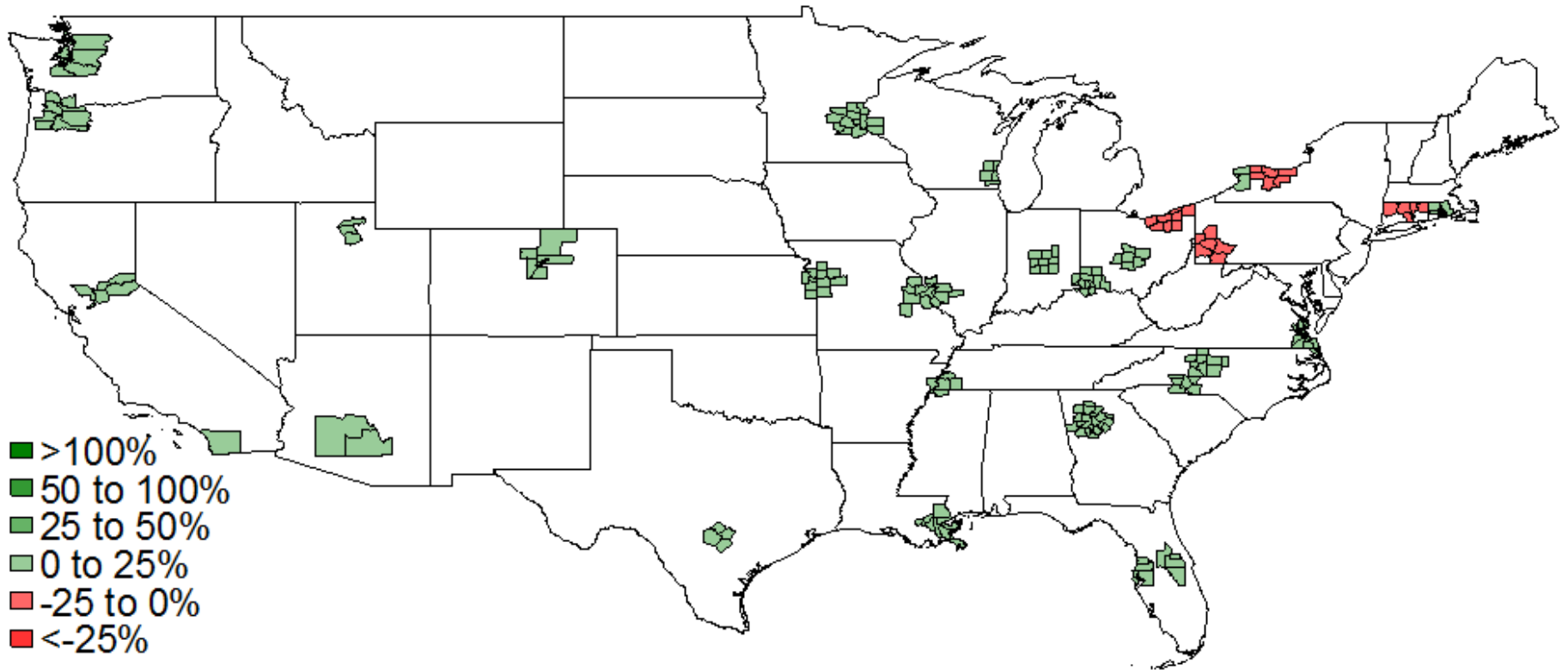
# Population growth 2010-2017 (%)

Metro areas, Population 250-1,000 k, 1993 USDA and U.S. Census Bureau  
MSA Definitions



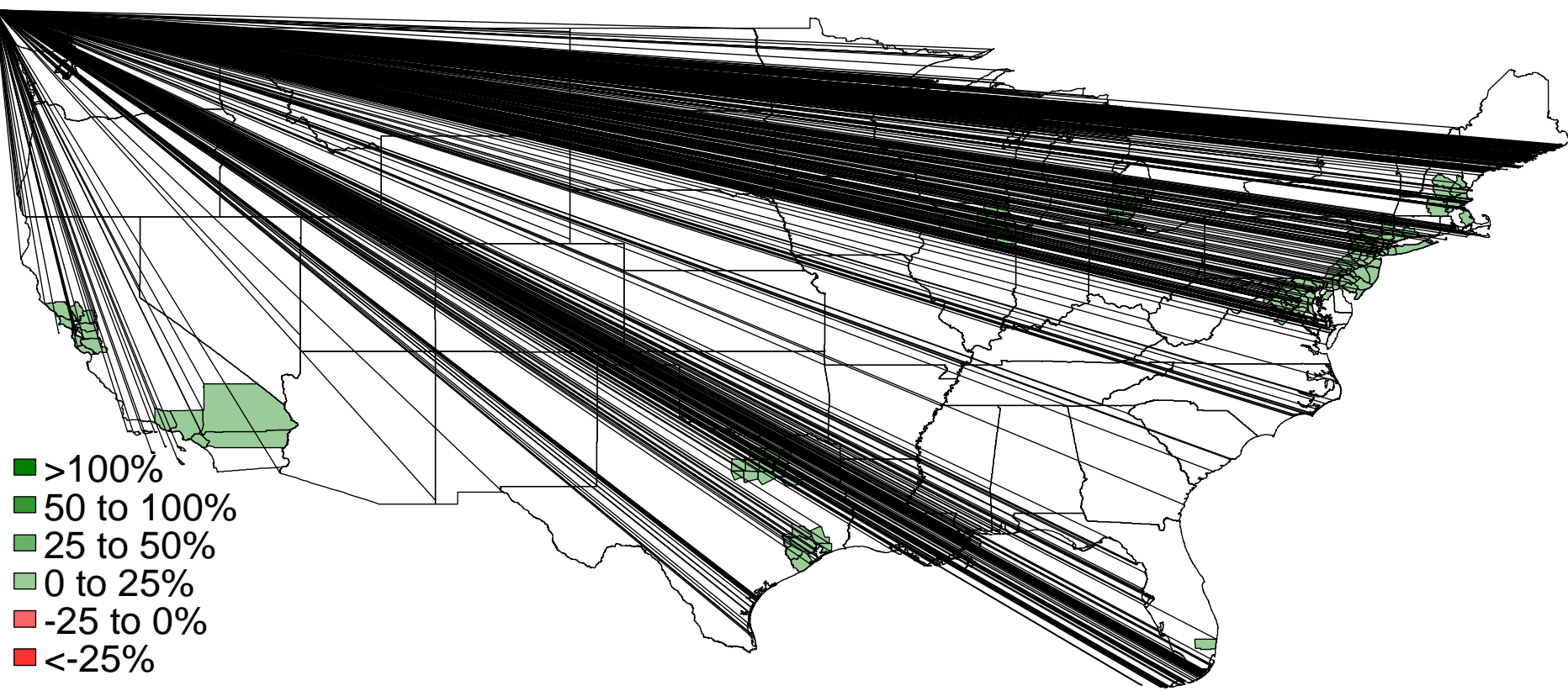
# Population growth 2010-2017 (%)

Metro areas, Population 1-3,000 k, 1993 USDA and U.S. Census Bureau MSA Definitions



(%)

# Metro areas, Population 3,000 k +, 1993 USDA and U.S. Census Bureau MSA Definitions



# Population growth 2010-2017 (%)

Metro areas, Population 3,000 k +, 1993 USDA and U.S. Census Bureau MSA Definitions

