



Employment Trends in Mayo & Western Region

*Education, Training & Supports for Jobseekers Expo
2 Sept 2015*

Pauline White, Policy Analyst, WDC



What I'll talk about

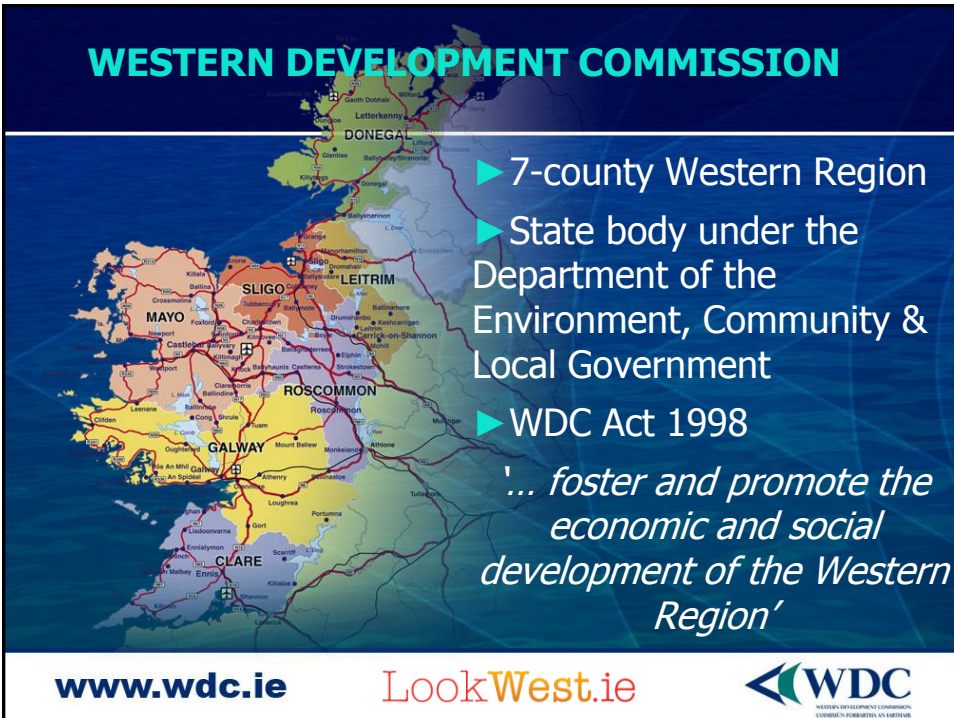
1. Jobs in Co Mayo
2. Jobs in Western Region
3. Enterprise in Co Mayo
4. National vacancies & skill shortages
5. Western Region growth sectors

www.wdc.ie

LookWest.ie



WESTERN DEVELOPMENT COMMISSION



Most jobs are not new jobs

- ▶ **2014 – 1.1 million labour market transitions**
 - ▶ 275,000 retiring etc
 - ▶ 250,000 changing jobs
- ▶ Most jobs are not NEW jobs, they already exist
 - ▶ Retirement – nurses, teachers, care workers & farmers
 - ▶ Replacement/Turnover – sales workers, carers, hospitality workers, hairdressers, clerks, labourers, operatives, carpenters, gardeners, fitness instructors, IT technicians & educational assistants

www.wdc.ie

LookWest.ie



Jobs in Co Mayo

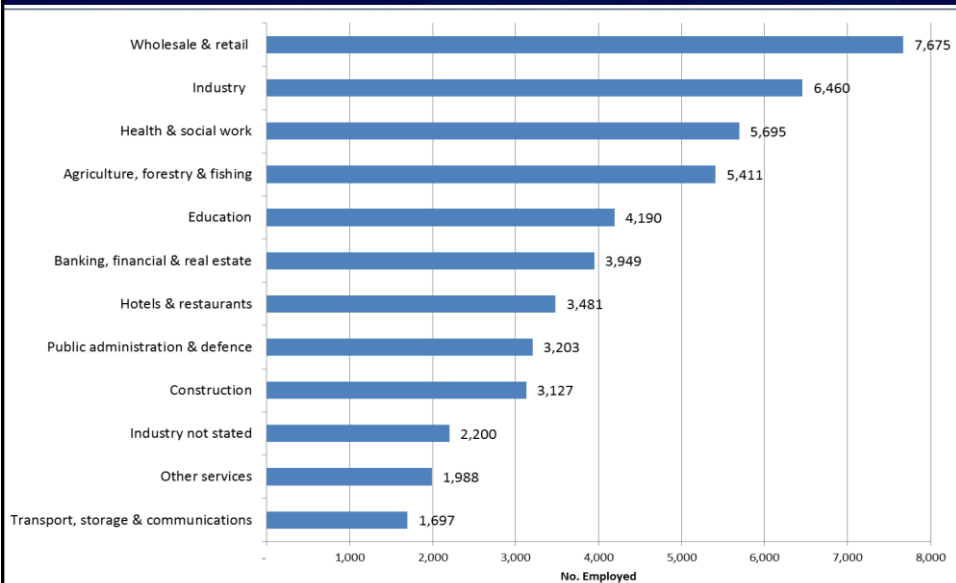
www.wdc.ie

LookWest.ie



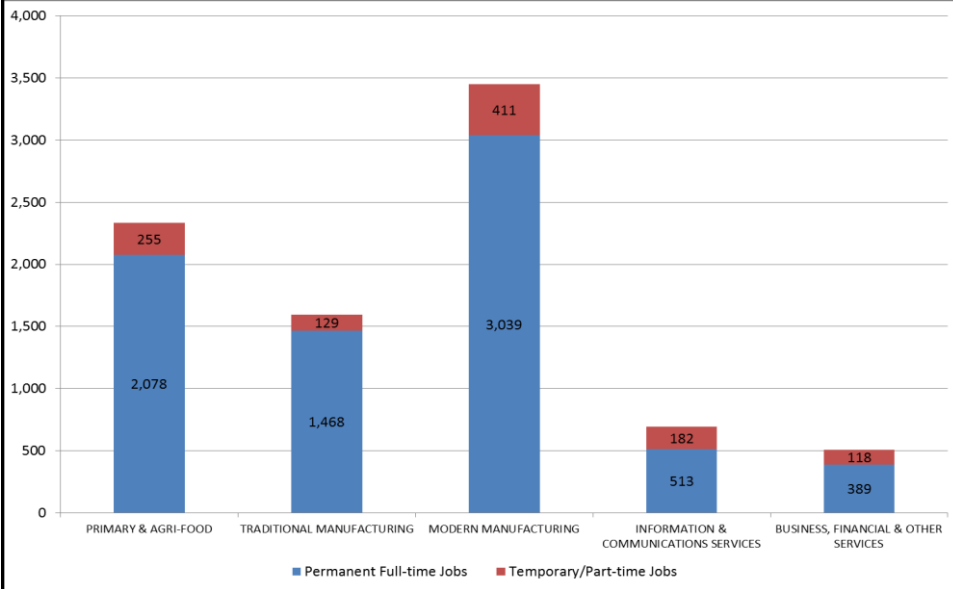
Jobs by sector in Co Mayo, 2011

(CSO, Census 2011)



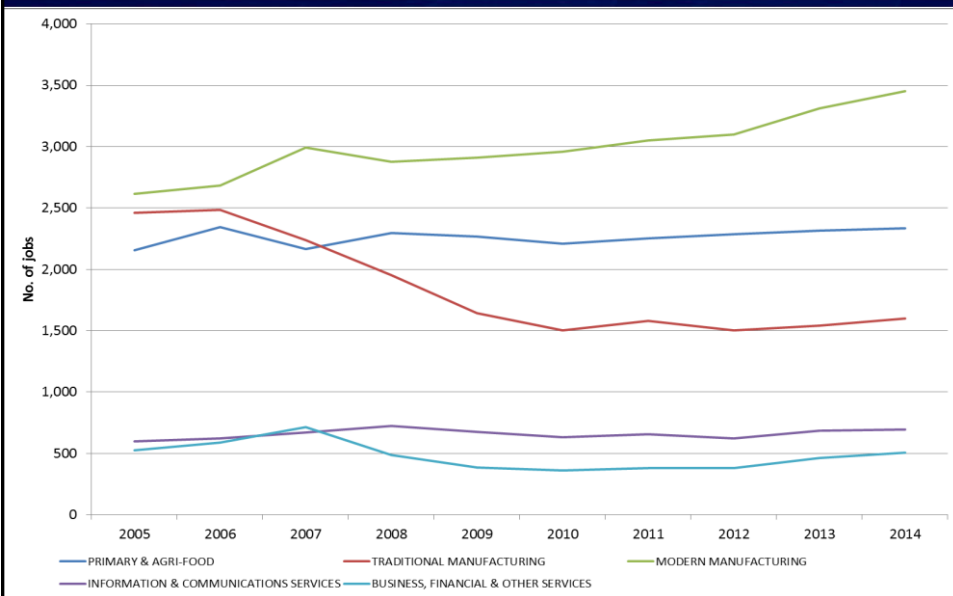
Jobs in agency assisted (EI or IDA supported) companies in Co Mayo, 2014

(DJEI Annual Employment Survey, 2014)



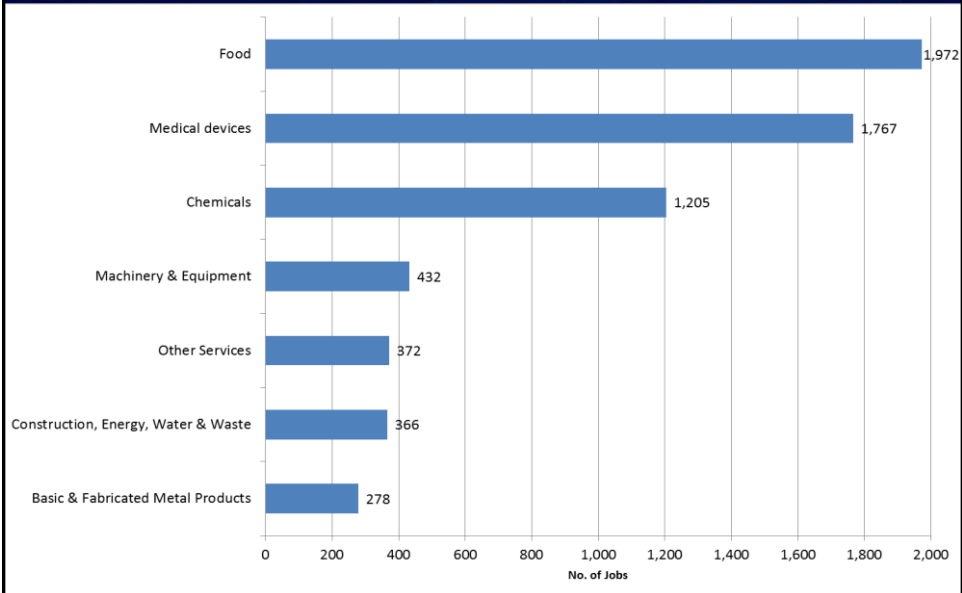
Jobs in agency assisted companies in Co Mayo, 2005-2014

(DJEI Annual Employment Survey, 2014)



Top sectors for agency assisted jobs in Co Mayo, 2014

(DJEI Annual Employment Survey, 2014)



Top sectors for agency assisted jobs in Co Galway & Co Sligo, 2014

(DJEI Annual Employment Survey, 2014)

Galway	Sligo
Medical devices	Chemicals
Computer programming	Medical devices
Computer, optical & equipment manufacturing	Food
Other services	Rubber & plastics
Computer consultancy services	Miscellaneous manufacturing

www.wdc.ie

LookWest.ie



Jobs in Western Region

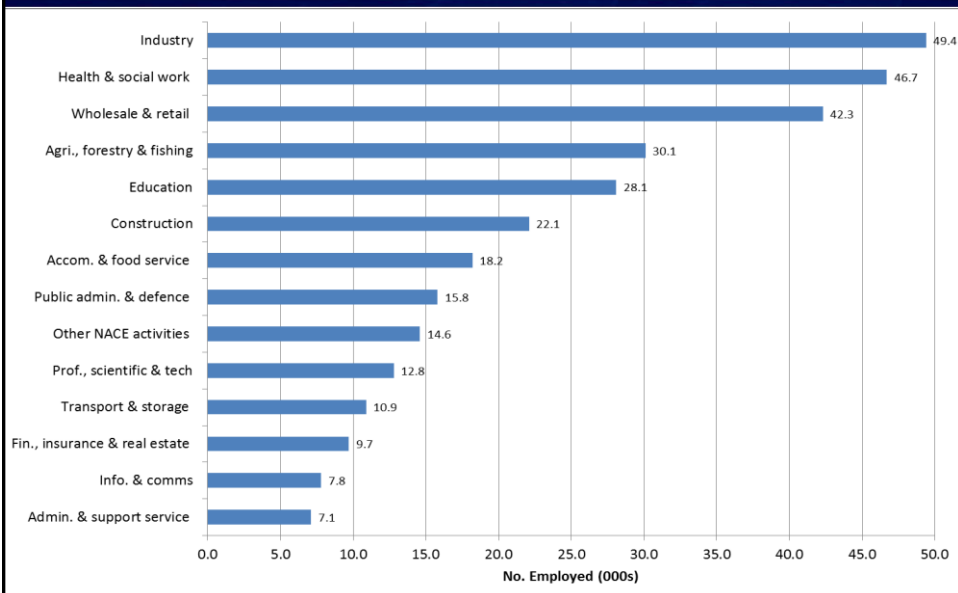
www.wdc.ie

LookWest.ie



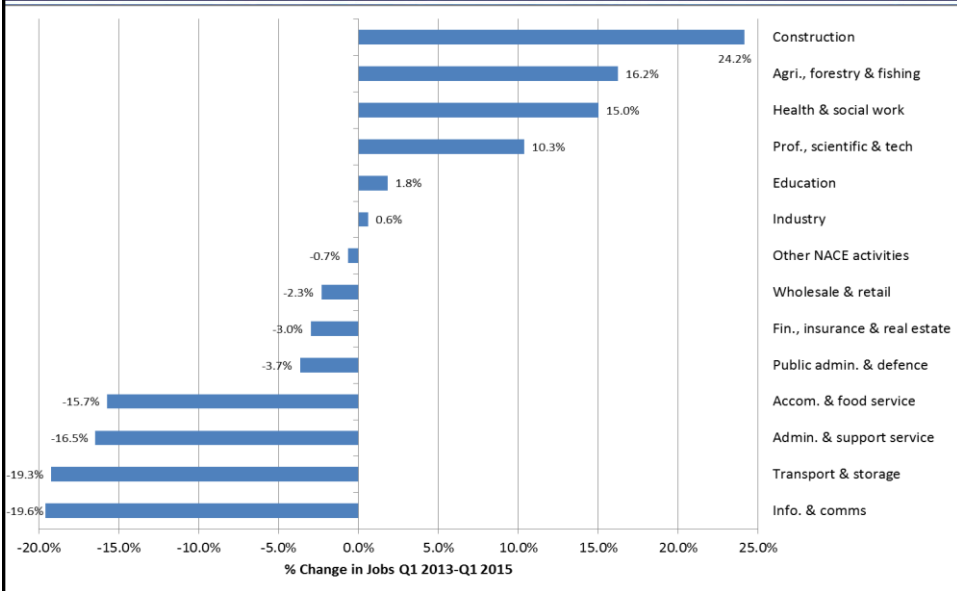
Jobs by sector in Western Region, 2015

(CSO, Quarterly National Household Survey, Q1 2015, Special Request)



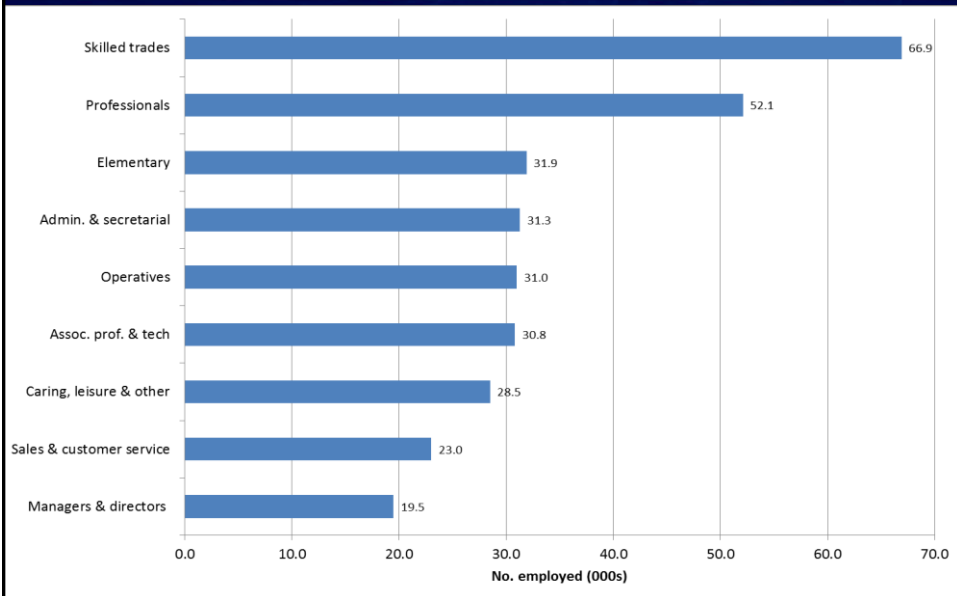
% change in jobs by sector in Western Region, 2013-2015

(CSO, Quarterly National Household Survey, Q1 2015, Special Request)



Jobs by occupation in Western Region, 2015

(CSO, Quarterly National Household Survey, Q1 2015, Special Request)



Enterprise in Co Mayo

www.wdc.ie

LookWest.ie



Enterprises in Co Mayo, 2012

(CSO, Business Demography 2012)

Sector	No. of Businesses
Wholesale & Retail	1,266
Construction	1,086
Accommodation & food service	609
Professional, scientific & technical	486
Manufacturing	313
Education	264
Administrative & support service activities	252
Transportation & storage	244
Real estate activities	238
Information & communication	128
Financial & insurance	56
Water & Waste	32
Total	4,734

www.wdc.ie

LookWest.ie



National Vacancies & Skill Shortages 2015

www.wdc.ie

LookWest.ie



National Vacancies & Skill Shortages 2015

(National Skills Bulletin 2015 – www.skillsireland.ie)

- ▶ **ICT:** programming & software development (languages, web/mobile), cloud computing, user experience web design, IT project management, databases/big data, technical / user support, networking & infrastructure
- ▶ **Engineering:** production & process (inc. med devices, pharma), quality & validation, product dev. & design, electrical, electronic, chemical (biotech/pharma), mechanical

www.wdc.ie

LookWest.ie



National Vacancies & Skill Shortages 2015

- ▶ **Science:** laboratory technicians, chemical & biological scientists, cardiac technicians (production), biotech technicians
- ▶ **Business & Financial:** risk management, financial clerks (inc. multilingual), accounting, business intelligence, data analytics, financial advisors, compliance

www.wdc.ie

LookWest.ie



National Vacancies & Skill Shortages 2015

- ▶ **Transport & Logistics:** supply chain management (admin to mgt), foreign languages, drivers, fork-lift & special vehicle drivers
- ▶ **Construction:** construction & quantity surveyors, building information modelling, steel erectors/fitters
- ▶ **Skilled trades:** precision tool makers, precision welders, butchers/de-boners, manufacturing operatives with technical & digital skills

www.wdc.ie

LookWest.ie



National Vacancies & Skill Shortages 2015

- ▶ **Sales & Customer Service:** technical product/service knowledge (e.g. med devices, software), marketing experts
- ▶ **Health:** advanced nurse practitioners & specialist nurses, doctors, radiographers
- ▶ **Social & Care:** qualified care & childcare workers. High turnover in all roles
- ▶ **Tourism:** qualified chefs. High turnover in all roles

www.wdc.ie

LookWest.ie



Western Region Growth Sectors

www.wdc.ie

LookWest.ie



Western Region Growth Sectors

- ▶ **Life Sciences (medical devices & pharmaceuticals)** – R&D, product development, operatives e.g. Hollister, Baxter, Allergan
- ▶ **ICT** – software development, computer programming, manufacturing operatives e.g. Lionbridge Tech, CBE
- ▶ **Engineering** – precision tool-making, machinery, electrical equipment, transport equipment e.g. McHales

www.wdc.ie

LookWest.ie



Western Region Growth Sectors

- ▶ **Food** – higher value-added, organic, artisan, functional, marine, R&D e.g. O’Haras, Nadurtha Pasta, CPAC
- ▶ **Green economy** – wood energy, wind energy, retro-fitting, energy efficiency, home improvement e.g. Comfort Solutions, Walter Moran Insulation
- ▶ **Care** – elder care, residential & home care e.g. RHS Home Care, Bluebird Care

www.wdc.ie

LookWest.ie



Western Region Growth Sectors

- ▶ **Tourism** – outdoor & adventure tourism, cultural, festivals, events (e.g. triathlons), water-based, 'grey' market, coach tourism e.g. Clew Bay Bike Hire, Hotels
 - ▶ Mayo 2013 – 218,000 overseas visitors; €60m revenue
- ▶ **Creative** – games, digital media, film & TV, arts, crafts e.g. Irish TV, artclickireland
 - ▶ MyCreativeEdge www.mycreativeedge.eu

www.wdc.ie

LookWest.ie



Thank You

Pauline White
Policy Analyst

Western Development Commission

Tel: 094 986 1441

E-mail: paulinewhite@wdc.ie

www.wdc.ie

LookWest.ie



Employment Sectors in Mayo Towns/Villages

(CSO, Census 2011)

- ▶ Commerce & Trade and Professional Services the two largest for many towns/villages (Ballina, Swinford, Foxford, Kiltimagh, Crossmolina, Kilkelly & Bangor Erris)
- ▶ Manufacturing biggest sector in Ballyhaunis & also important in Kilalla
- ▶ Construction important in Kilkelly & Ballycastle
- ▶ 'Other' a large source of employment in Ballycastle, Knock, Belmullet & Charlestown
- ▶ Public administration big source of employment for Swinford, Charlestown & Foxford
- ▶ Transport & Communications most important around IWAK (Kilkelly, Charlestown & Swinford)
- ▶ Agriculture is most important in the smaller centres (Ballycastle, Kilkelly & Bangor Erris)

www.wdc.ie

LookWest.ie

